



**ParaPost® FIBER WHITE**

**ParaPost® FIBER LUX**

**The Ideal Post System for  
Laboratory and Office**

**coltène**   
**whaledent®**

# Metal-free Aesthetics

## Properties of ParaPost® Fiber Lux and ParaPost® Fiber White:

- **ParaPost® Fiber White** and **ParaPost® Fiber Lux** are ideal for highly aesthetic, metal-free restorations
- The fibreglass-reinforced resin **prevents shadow development** at the gingival margin and in all-ceramic crowns
- Its **elasticity performance rivals** that of dentin – less risk of fracture since loading is more evenly distributed
- **Less brittle** than ceramic root posts (e.g. zirconium oxide)
- **Radiopaque** – the posts are easily visualised on the x-ray for your follow-up
- **Rounded head** minimises stress in the core material
- **Antirotation surfaces** stabilise the adapted core material
- **Double undercuts** help mechanical retention of the core material
- **Parallel shoulders increase** mechanical retention
- **Compatible with ParaPost® drills**

## Specific Properties

### of ParaPost® Fiber Lux:

- **Superior strength** combined with high flexibility
- **Translucence** enables use of light-cured cements and core materials

### of ParaPost® Fiber White:

- **Fiber White** is opaque
- **Chemical bond** between Fiber White and core composite material

### Material Composition

	ParaPost® Fiber White	ParaPost® Fiber Lux
Fibreglass	42 %	60 %
Resin	29 %	40 %
Filler	29 %	

## Superior Post Head Design

### ParaPost® Fiber Lux/Fiber White



The rounded head design of the Fiber Lux and Fiber White reduce stresses in the core material and thereby prevent micro-fractures

### Other Posts



Posts that have heads with sharp edges or angles create stress points in the core material that can lead to micro-fractures

Using computer analysis and imaging (Finite Element Analysis)\*, areas of stress concentrations can be predicted. Red indicates areas of greatest stress. Note stress points at each sharp edge of the post with a non-rounded head design. Posts with sharp-edged heads or sharp angles create stress points in the core material that can lead to micro-fractures.

\* The analysis was performed by SAS Ingenieurbüro AG, Switzerland

## ParaPost® ParaForm

Faster and easier core build-up. Time-consuming freehand modelling of the core is no longer necessary.



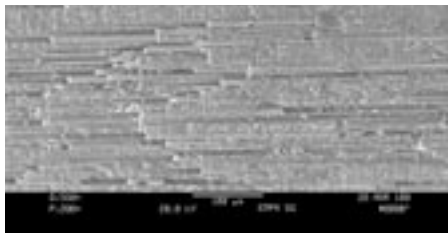
## ParaPost® ParaCore

ParaCore is a dual-curing core material with glass fill particles and extra glass fibres to contribute strength to the core. ParaCore is available in opaque and dentin.



# Remarkable Strength and Extraordinary Bonding

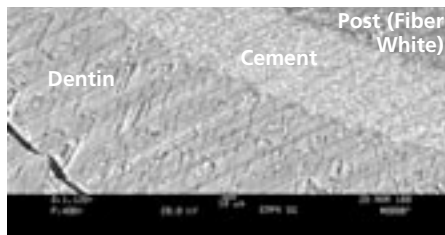
## Remarkable Strength



*Fiber White – 400 × enlargement*

Uniformly unidirectional fibre clusters strengthen the post structure without compromising flexibility.

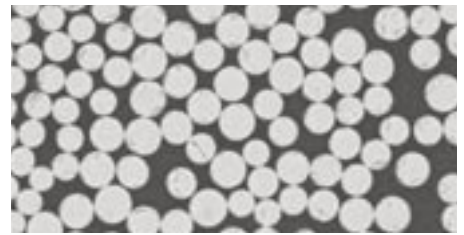
## Extraordinary Bonding



*Fiber White – 140 × enlargement*

Fiber White undergoes a chemical bond with self- and dual-curing cements and all core materials with a composite base. This ensures a homogeneous restoration.

## Superior Strength



*A scanning electron microscope image shows a cross-section of a Fiber Lux post*

## Use in the Office



*Apply conditioner in the root canal.  
Remove excess conditioner with a paper point*



*Moisten the post with ParaPost® Cement and apply also to the root canal with a paper point or Lentulo*



*Seat the ParaPost® Fiber Lux / Fiber White in the root canal and cement it*



*Core build-up with ParaCore and ParaForm core former*



*Prepared post and core*

## Use in the Laboratory



*Premanufactured working model*



*Isolate the prepared model core*



*Select a ParaPost® Fiber White. If necessary, shorten from below*



*Build-up with ParaCore*



*Prepared restoration*



### ParaPost® CEMENT™

SELF CURE RESIN CEMENT

ParaPost® cement is the ideal complement for the aesthetic ParaPost® system.



## Order Information

### ParaPost® FIBER WHITE



**ParaPost® Fiber White Introductory Kit**  
 PF - 160 10 posts size 4.5–6,  
 4 drills size 4.5–6,  
 1 Hand driver

#### ParaPost® Fiber White Refills - 5 posts per Refill

PF - 161-3	size 3	(ø 0.90 mm)
PF - 161-4.5	size 4.5	(ø 1.14 mm)
PF - 161-5	size 5	(ø 1.25 mm)
PF - 161-5.5	size 5.5	(ø 1.40 mm)
PF - 161-6	size 6	(ø 1.50 mm)

### ParaPost® FIBER LUX



**ParaPost® Fiber Lux Introductory Kit**  
 PF - 170 15 posts size 3–6,  
 6 drills size 3–6,  
 1 Hand driver

#### ParaPost® Fiber Lux Refills - 5 posts per Refill

PF - 171-3	size 3
PF - 171-4	size 4
PF - 171-4.5	size 4.5
PF - 171-5	size 5
PF - 171-5.5	size 5.5
PF - 171-6	size 6

### ParaPost® ParaCore dual cure core material



**5850 ParaCore Handmix Introkit**  
 4 g base material white, 4 g dentin  
 base material, 2 x 4 g catalyst, 3 ml  
 adhesive conditioner A, 3 ml adhesive  
 conditioner B, 2 x 1.2 ml etchant 15,  
 10 pre-sorted coreformers, accessories

**5853 ParaCore Automix Single dentin**  
 25 ml ParaCore dentin  
 20 MT/YELLOW/CLEAR/WHITE/69/S\*  
 20 Oral Tips

**5854 ParaCore Automix Single White**  
 25 ml ParaCore white  
 20 MT/YELLOW/CLEAR/WHITE/69/S\*  
 20 Oral Tips

**5851 ParaCore Handmix Refill dentin**  
 4 g dentin base material,  
 4 g catalyst, accessories

**4470 Dispenser**  
 25 ml cartridges

### ParaPost® CEMENT™ SELF CURE RESIN CEMENT



**P-7340 ParaPost® Cement Introkit**  
 2 x 2.5 g cement base material  
 2 x 2.5 g cement catalyst  
 3 ml Adhesive Conditioner A  
 3 ml Adhesive Conditioner B  
 accessories

**P-7341 ParaPost® Cement Refill**  
 2 x 2.5 g cement base material  
 2 x 2.5 g cement catalyst

**P-7342 ParaPost® Adhäsiv Conditioner  
Refill**  
 3 ml Adhesive Conditioner A  
 3 ml Adhesive Conditioner B

### ParaPost® ParaForm



**5853 ParaCore Automix Single dentin**  
 25 ml ParaCore dentin  
 20 MT/YELLOW/CLEAR/WHITE/69/S\*  
 20 Oral Tips

**5854 ParaCore Automix Single white**  
 25 ml ParaCore white  
 20 MT/YELLOW/CLEAR/WHITE/69/S\*  
 20 Oral Tips

**5860 ParaForm Complete Set**  
 50 pre-sorted coreformers in 10 sizes

**5861 ParaForm Sample Kit**  
 10 pre-sorted coreformers

#### ParaPost® Para Form Refills - 10 coreformers per Refill

<b>5871</b> size 1	<b>5876</b> size 6
<b>5872</b> size 2	<b>5877</b> size 7
<b>5873</b> size 3	<b>5878</b> size 8
<b>5874</b> size 4	<b>5879</b> size 9
<b>5875</b> size 5	<b>5880</b> size 10

#### ParaPost® X™ Drill Bits Twin flutes applicable to all X System posts

size	3 pcs.	
3 Ø 0.90 mm	Brown	<b>P 42 3</b>
4 Ø 1.00 mm	Yellow	<b>P 42 4</b>
4.5 Ø 1.14 mm	Blue	<b>P 42 4.5</b>
5 Ø 1.25 mm	Red	<b>P 42 5</b>
5.5 Ø 1.40 mm	Violet	<b>P 42 5.5</b>
6 Ø 1.50 mm	Black	<b>P 42 6</b>
7 Ø 1.75 mm	Green	<b>P 42 7</b>
3–6 (one of each size)	6 pcs.	<b>P 42 A</b>

\*MT = Mixing Tips

www.coltenewhaledent.com  
 © 2005 Coltène/Whaledent AG

**Coltène/Whaledent Ltd.**  
 The President Suite-A  
 Kendal House, Burgess Hill  
 Victoria Way  
 West Sussex, RH15 9NF/U.K.  
 Tel. +44 (0)1444 235486  
 Fax +44 (0)1444 870640  
 hq@coltenewhaledent.co.uk

**Coltène/Whaledent AG**  
 Feldwiesenstrasse 20  
 9450 Altstätten/Switzerland  
 Tel. +41 (0)71 757 53 00  
 Fax +41 (0)71 757 53 01  
 office@coltenewhaledent.ch

**Coltène/Whaledent Inc.**  
 235 Ascot Parkway  
 Cuyahoga Falls, Ohio 44223/USA  
 Tel. +1 330 916 8800  
 Fax +1 330 916 7077  
 productinfo@coltenewhaledent.com

**coltène  
whaledent®**